

Revo Micro Datasheet



Will - E3D

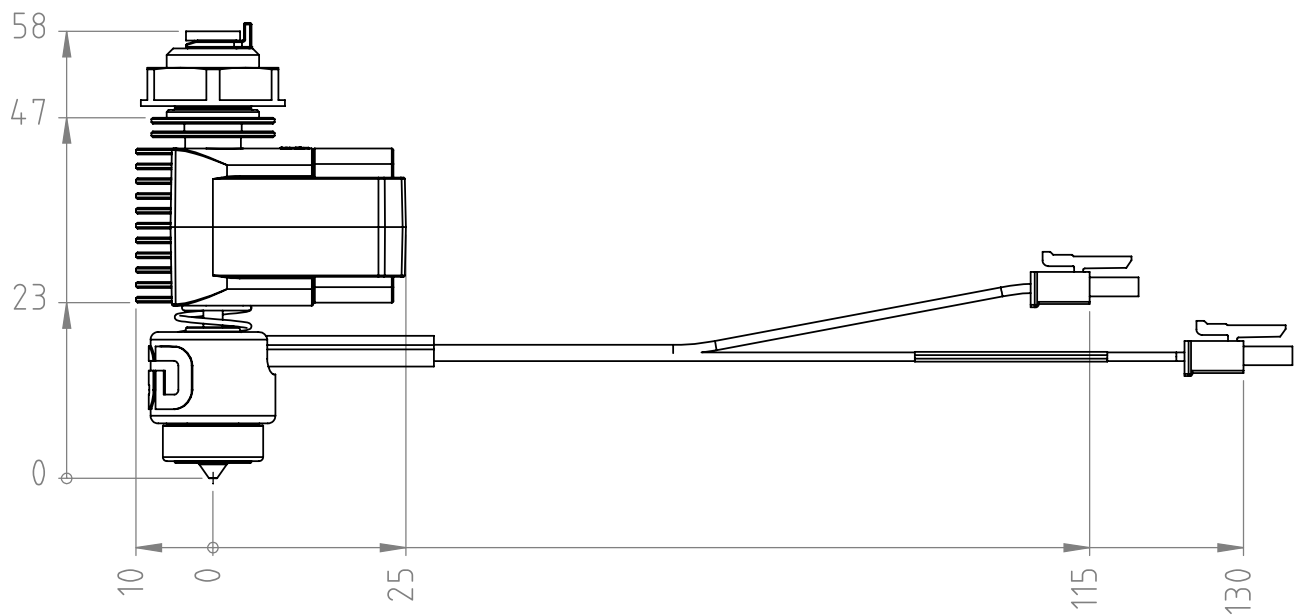
Revo™ Micro DATASHEET



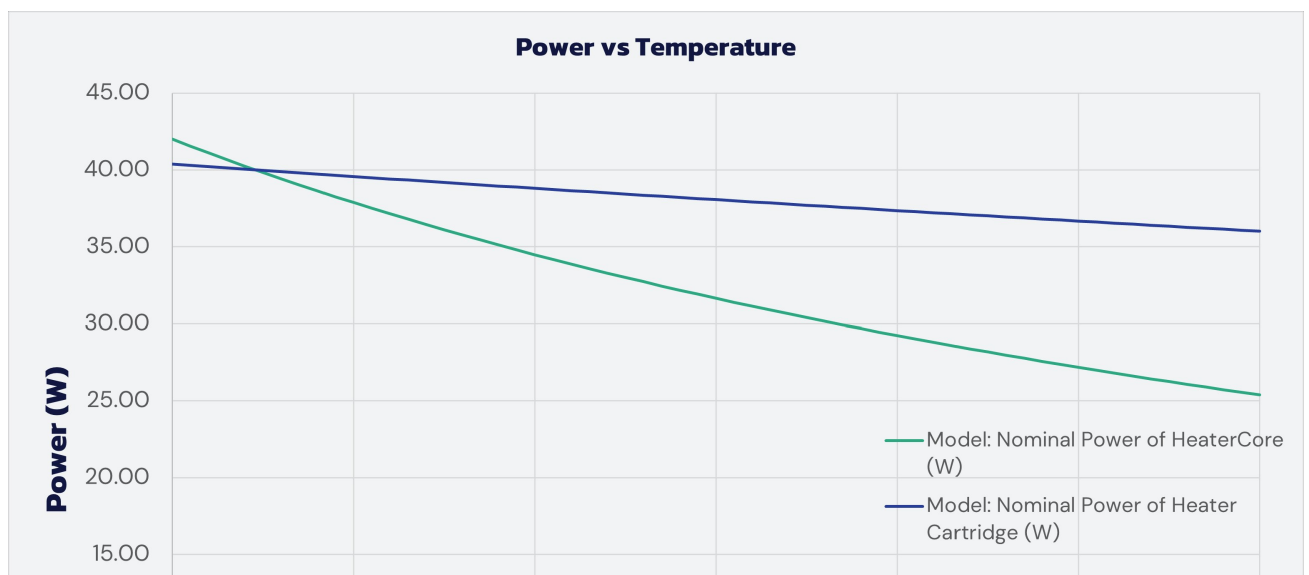
Summary

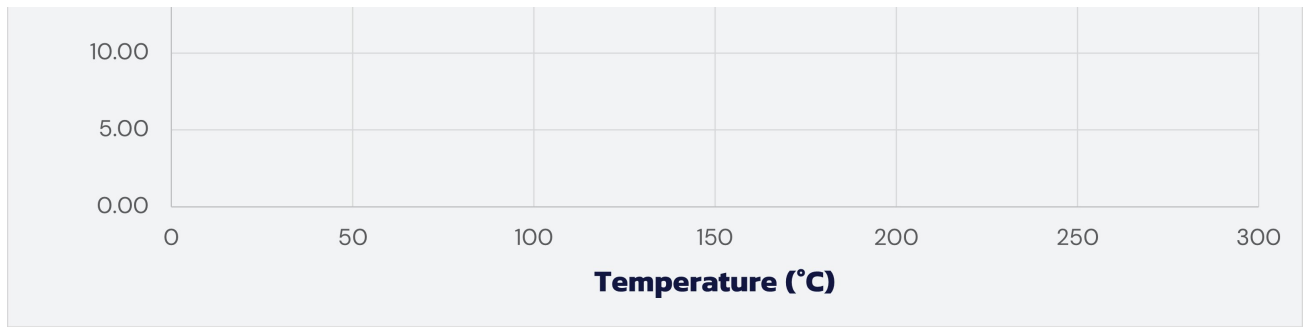
- Max Printing Temperature: 300°C
- Mass: ~30g
- Temperature sensor type: thermistor, Semitec 104NT-4-R025H42G
- Voltage options: 12V or 24V
- Wattage: 40W
- Filament diameter: 1.75mm

Volume and Dimensions



Power vs Temperature





Initial Resistance of a 24V heater at 23°C: 14.4Ω

Temp Coefficient of HeaterCore: 0.002078

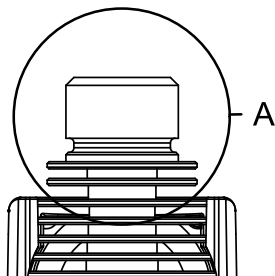
Temp Coefficient of Heater Cartridge: 0.002078

Mounting Guidance

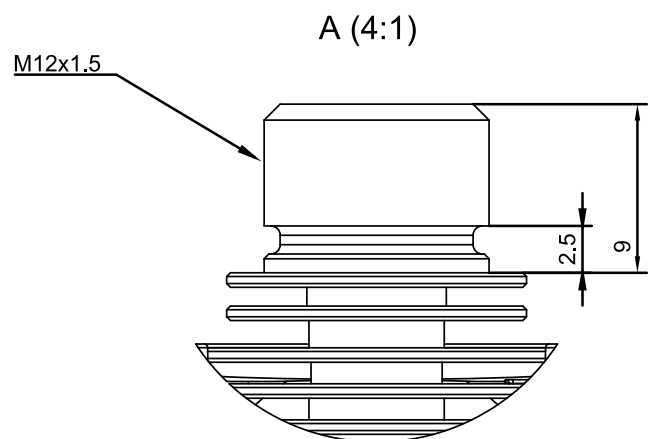
Mounting type: screw thread (M12x1.5). Depth 5mm.

Minimum plate thickness: 1mm

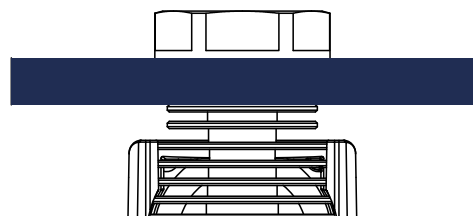
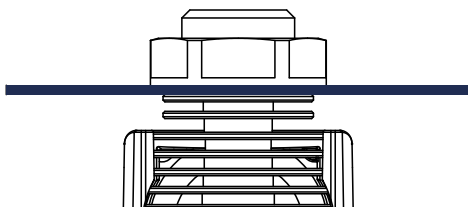
Maximum plate thickness: 5mm



[Figure 2: Mounting interface location]



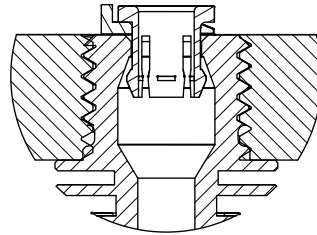
[Figure 3: Detail View of mounting interface]



[Figure 4: 1mm plate through-hole mounting]



[Figure 5: 5mm plate through-hole mounting]



[Figure 6: 9mm threaded plate mounting]

[Figure 7: Cross section 9mm threaded plate mounting]

Cable Orientation

Turn Revo HeaterCore anti-clockwise to orient cables. Turning clockwise will cause the spring to disengage

Assembly

There is no need to hot-tighten the Revo Micro assembly. Tools must not be used to fasten the Revo Nozzle to the HeaterCore.

Operational Temperatures

Maximum recommended ambient operating temperature (PLA): 40°C
Lowest temperature rated component: Fan 70°C

Electrical Specification

Fan:

- 5V
- Please use the supplied regulator board. Running directly from 12V or 24V will cause failure
- Fan current: 176mA
- Fan noise: 25.0dB(A)

Heater:

- 12V or 24V, 40W nominal power at ambient

Temperature:

- Temperature sensor: Semitec 104NT-4-R025H42G

Connections

Fan: Molex Micro-Fit 3.0, 2 pin vertical

Heater: Molex Micro-Fit 3.0, 2 pin horizontal

Temperature sensor: Molex Micro-Fit 3.0, 2 pin horizontal

Assembly is supplied with 1m cables to connect to mainboard

Materials

Heatsink: Aluminium (black anodised)

Nut: Nylon

HeaterCore: Alumina, Bronze

Fan shroud: Polycarbonate

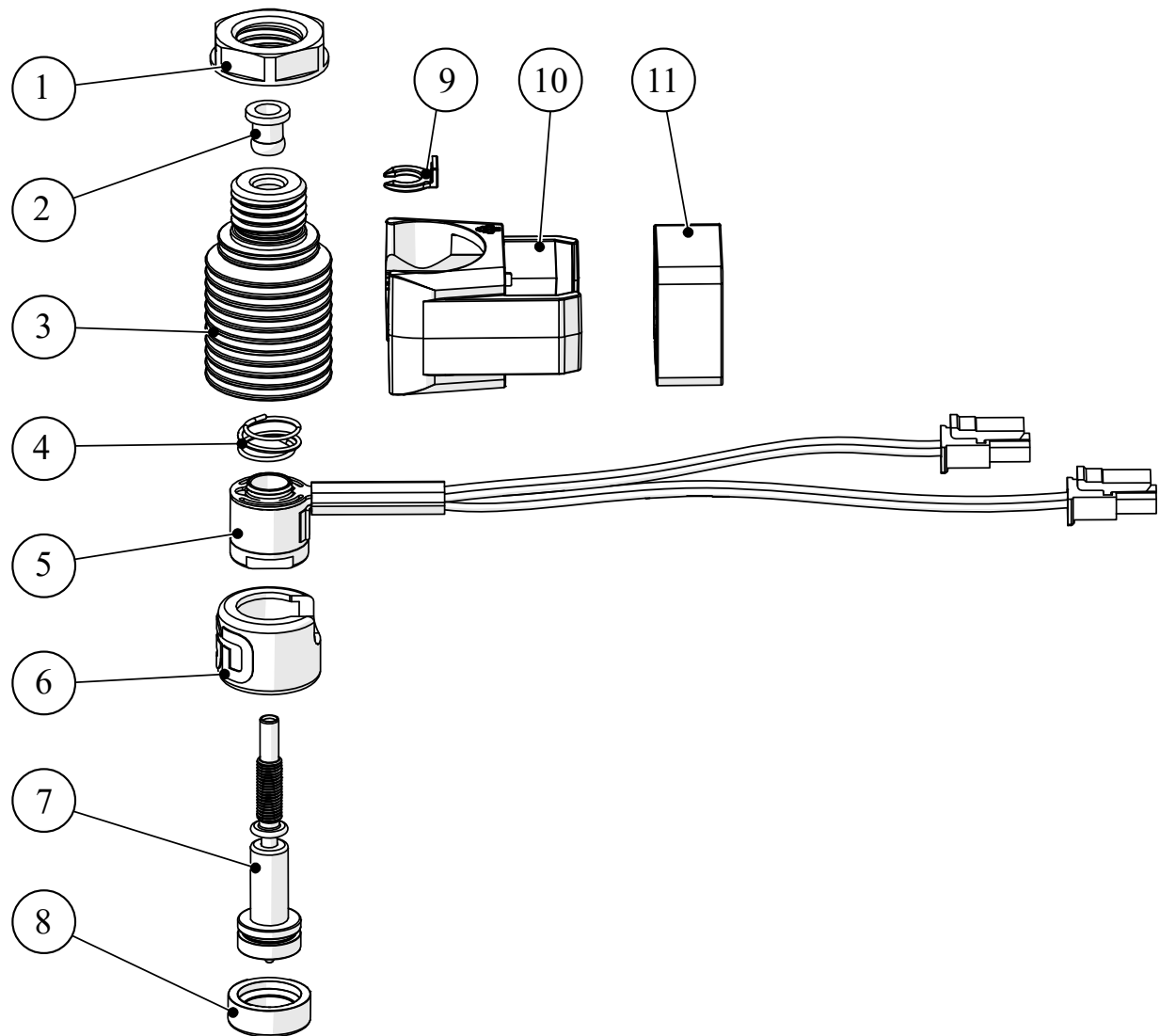
Compliance

Reach

RoHS

WEEE

Exploded View



1. M12 x 1.5 nut

2. Collet

3. Revo Micro HeatSink

4. Revo Spring

5. Revo HeaterCore

6. Revo HeaterCore sock

7. Revo Nozzle

8. Revo Nozzle sock

9. Collet clip

10. Revo Micro fan duct

11. 20 x 20 x 10 5V fan

Changelog

Edition 4

Approved: RY 19/07/22

Published: 19/07/22

Notes: Migrated PDF to Zendesk, Power vs Temperature graph added and minor phrasing changes

Edition 3

Approved: DR 07/12/21

Published: 07/12/21

Notes: Flow rate units changed to 10mm³/sec

Edition 2

Approved: RY 13/09/21

Published: 12/10/21

Notes: Thread renamed to Revo Micro

Edition 1

Approved: RY 17/09/21

Published: 17/09/21

Revo™ Micro
DATASHEET



Have more questions? [Submit a request](#)

Return to top ^

[E3D Help Centre](#)