

TEST REPORT

(RoHS)

Sample Name: PolyMax PLA

Model: 1.75 mm, True White

Client Name: JF Polymers (Suzhou) Co., Ltd.

Shanghai EBTest Technology Co., Ltd.



TEST SPECIFICATION:

According to customer request, test the content of 1. Pb 2. Cd 3. Hg 4. Cr₆₊ 5. PBBs 6. PBDEs in the sample. For details refer to next page(s).

APPLICANT IDENTIFICATION:

APPLICANT: JF Polymers (Suzhou) Co., Ltd.

ADDRESS: 11 Sihai Rd., Bldg 2, Suite 502, Changshu Economic Development Zone (CEDZ), Changshu, Jiangsu Province 215513, China

SAMPLE DESCRIPTION:

SAMPLE NAME: PolyMax PLA

Batch No.: S2C14012301TW11

MATERIAL/COLOR: Plastic / True White

TEST PERIOD: 2014.02.18 — 2014.02.25

ISSUED DATE: 2014.02.26

TEST METHOD(S):

Testing Item		Testing Method	Testing Limit (mg/kg)
Pb		With reference to IEC 62321:2008, determined by ICP-OES	2
Cd		With reference to IEC 62321:2008, determined by ICP-OES	2
Hg		With reference to IEC 62321:2008, determined by ICP-OES	2
Cr ₆₊		With reference to IEC 62321:2008, determined by UV-vis	1
PBBs	MONOBB	With reference to IEC 62321:2008, determined by GC-MS	5
	DIBB		5
	TRIBB		5
	TETRABB		5
	PENTABB		5
	HEXABB		5
	HEPTABB		5
	OCTABB		5
	NONABB		5
	DECABB		5
	MONOBDE		5
	DIBDE		5
	TRIBDE		5



RoHS TEST REPORT

E140218032A

PBDEs	TETRABDE	With reference to IEC 62321:2008, determined by GC-MS	5
	PENTABDE		5
	HEXABDE		5
	HEPTABDE		5
	OCTABDE		5
	NONABDE		5
	DECABDE		5

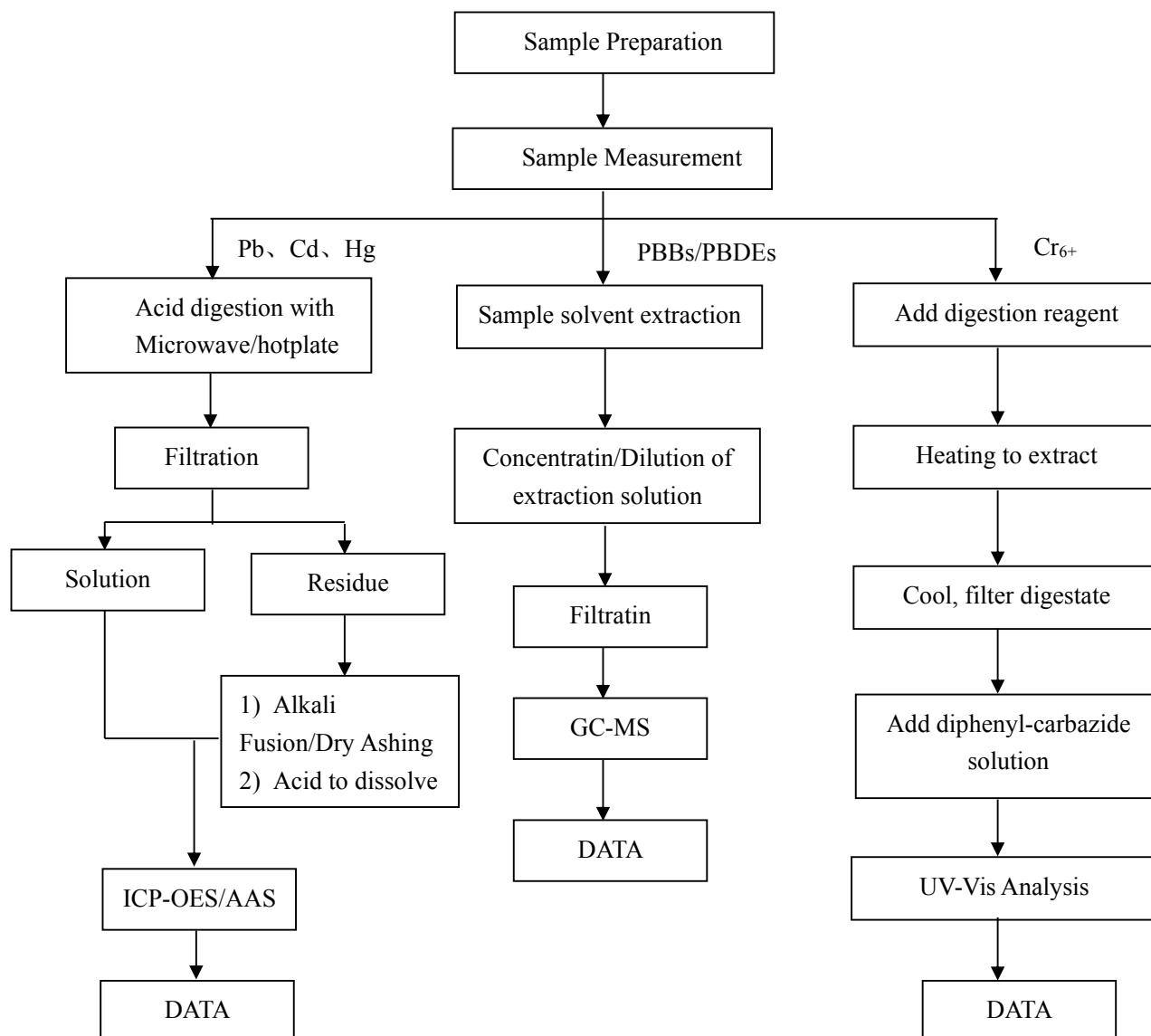
TEST RESULT(S):

Testing Item(s)		Directive Limit (mg/kg)	Result (mg/kg)
Pb		≤ 1000	N. D.
Cd		≤ 100	N. D.
Hg		≤ 1000	N. D.
Cr ₆₊		≤ 1000	N. D.
PBBs	MONOBB	≤ 1000	N. D.
	DIBB		N. D.
	TRIBB		N. D.
	TETRABB		N. D.
	PENTABB		N. D.
	HEXABB		N. D.
	HEPTABB		N. D.
	OCTABB		N. D.
	NONABB		N. D.
	DECABB		N. D.
PBDEs	MONOBDE	≤ 1000	N. D.
	DIBDE		N. D.
	TRIBDE		N. D.
	TETRABDE		N. D.
	PENTABDE		N. D.
	HEXABDE		N. D.
	HEPTABDE		N. D.
	OCTABDE		N. D.
	NONABDE		N. D.
	DECABDE		N. D.

TESTING ENVIRONMENT:

1) Testing environment: Temperature(22°C-26°C); Humidity(55%-65%)

TESTING FLOW CHART:



REMARKS:

mg/kg = PARTS PER MILLION; N.D.=NOT DETECTED or < MDL; N.A.=NOT APPLICABLE; N.T.=NOT TESTED AS THE APPLICANT'S REQUEST.

1. THE REPORT RELATES TO THE SAMPLE(S) SUPPLIED BY THE APPLICANT.
2. THIS TEST REPORT IS NOT PERMITTED TO BE DUPLICATED EXCEPT IN FULL.

SAMPLE PHOTO(S):



***** END *****