

# EINSTAR VEGA

Unleash Your 3D Vision

Wireless All-In-One 3D Scanner



# ALL-IN-ONE System

You can take the VEGA with you wherever you go.

Scan, save, and share the data at any time, unleashing endless possibilities with 3D vision.

- *Two Scanning Technologies in One*
- *Built-in Computing*
- *Internal Data Archiving*

# Two 3D Scanners in One

## VCSEL For Long Range Scanning

- *Smooth Scanning under Unlimited Environment*

## MEMS For Short Range Scanning

- *Stable Scanning for High-Detail Data*





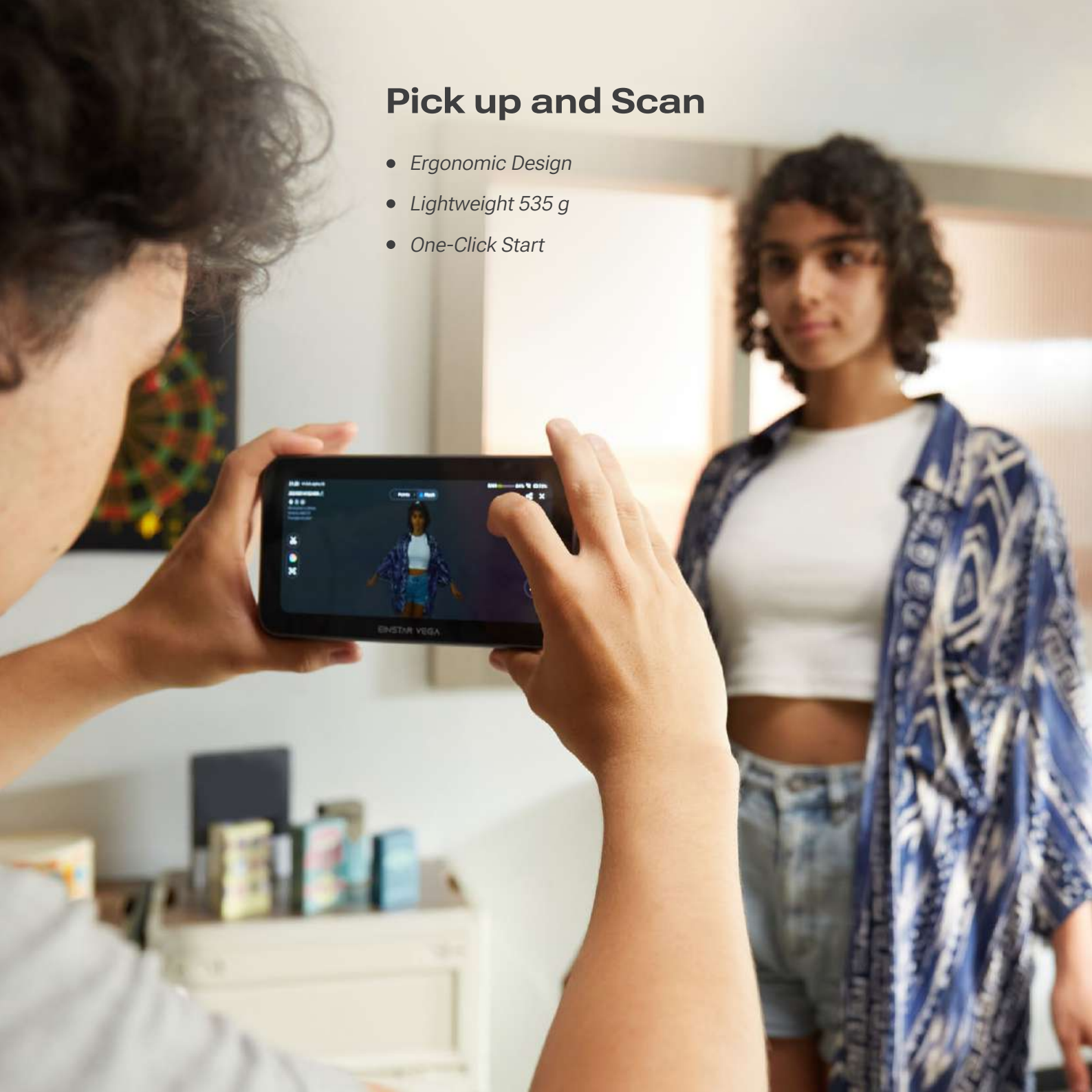
VCSEL Projector

MEMS Projector

EINSTAR

## Pick up and Scan

- *Ergonomic Design*
- *Lightweight 535 g*
- *One-Click Start*







## Wireless Solution

- *Wireless Scanning – Without Connecting to PC*
- *Wireless Transfer – Data Sharing in SHINING 3D Cloud*
- *Wireless Projection – Display on a Second Screen*



## Comprehensive Object Scanning

Coverage from small to large objects

### Fast Mode

- Working Distance 350 - 1500 mm for medium to large size objects
- Scanning Speed Up to 20 FPS





HD Mode

- Working Distance 100 - 250 mm for small to medium size objects
- Scanning Speed Up to 15 FPS

*\*Turntable and Tripod are not included in Regular Edition*



# Beginner-Ready Design

## One-Click Processing

- *Automatic Configuration Selection*
- *Efficiency Improvement*

## Powerful Hardware

- *6.4 Inch 2K AMOLED*
- *32GB RAM*
- *32GB eMMC + 512GB SSD*
- *48MP RGB Texture Camera*
- *Continuous Operation During Charging*



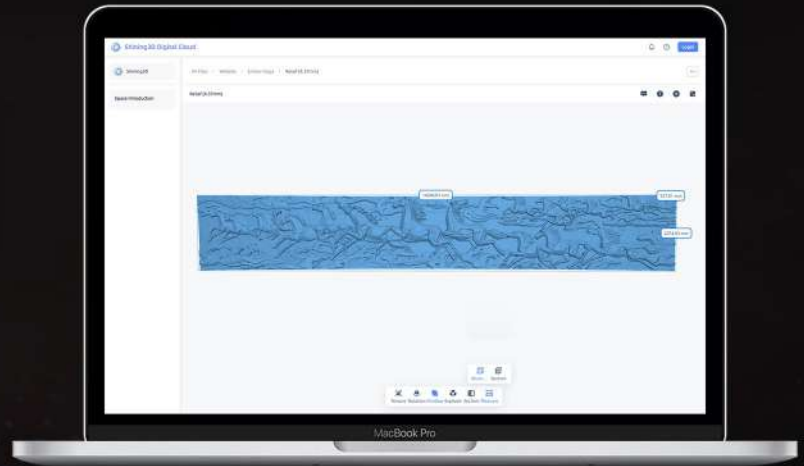


# SHINING 3D Cloud

One Touch Sharing of 3D Scanned Data to Showcase Your Shining Ideas

- *Data Sharing and Collaboration*
- *Data Storage and Management*
- *Data Measurement*

*\*Free 5GB space to each SHINING 3D user*

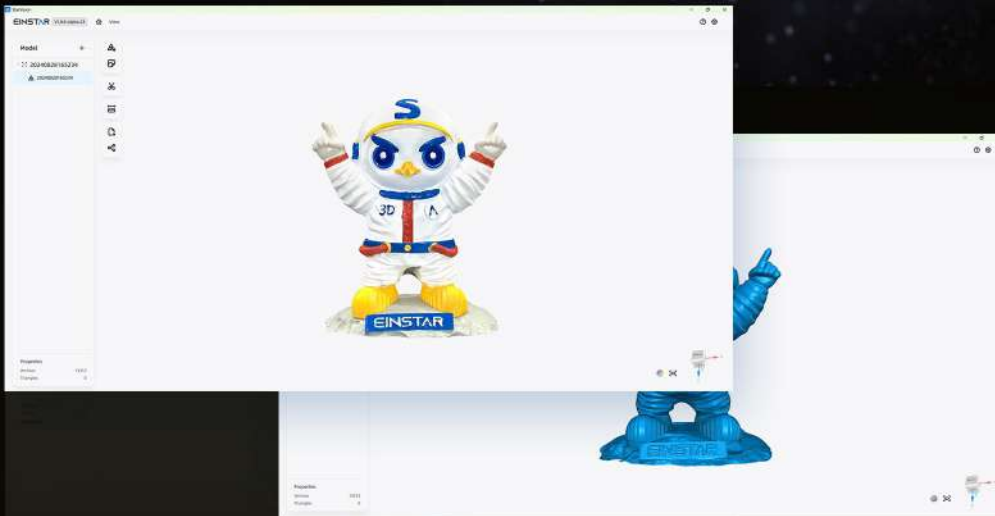


3D MODEL



## PC Software StarVision

Compatible with Windows and Mac OS



3D MODEL



# Reliable Scanning Outdoor and Indoor

- *Outdoor Scanning under Sunshine*
- *Ideal for Dark Surfaces*



# Smooth Scanning at Any Time

- *Scan at Night without Limitation*





# SPECIFICATIONS

# EINSTAR VEGA

Scan Mode	HD Mode	Fast Mode
Light Source	Infrared MEMS	Infrared VCSEL
Point Distance	0.05 - 3 mm	0.5 - 10 mm
Capture Frame	Up to 15 FPS	Up to 20 FPS
Working Distance	100 - 250 mm	350 - 1500 mm
Data Alignment Mode	Feature alignment, Markers alignment, Texture alignment	
IR Camera Resolution	2MP	1.3MP
Color Camera Resolution	48MP	
Output Formats	ply; stl; obj; asc	
Outdoor Scan	Yes	
Scanner Body Weight	Limited edition: 643 g; Regular edition: 535 g	
Scanner Size	180 mm × 95 mm × 26.5 mm (L × W × H)	
Supported OS	No computer required for 3d scanning operation; StarVision(Data processing program on PC): Windows10/11(64-bit), macOS Recommended PC configuration: Intel i7, 32 GB RAM; macOS 11.0(on Apple chip)	
CPU	8-core CPU, 2.4GHz	
RAM	32GB LPDDR4 Memory	
Internal Hard Drive	32GB eMMC + 512GB SSD	
Power Charger	65W fast charging, supports PD/PPS protocols	
Interface	Wi-Fi 6, USB Type C	
Battery	Built-in 5000mAh; External power bank charging supported	
Touchscreen	6.4" 2K AMOLED	
Supplemental Light	10 LED	
IMU	6 DoF	
Operating Temperature Range	-10°C - 40°C	
Operating Humidity Range	0 to 90% RH (non-condensing)	
Packing Size	380 mm × 305 mm × 155 mm	
Protection Grade	IP50	

## SHINING 3D Tech Co., Ltd.

Hangzhou, China  
P: +86-571-82999050  
No. 1398, Xiangbin Road, Wenyan, Xiaoshan,  
Hangzhou, Zhejiang, China, 311258

Hong Kong, China  
P: +852 2334 8468  
Flat 303B, 3/F, Tower 2, Enterprise Square 1, 9  
Sheung Yuet Road, Kowloon Bay, KLN, HK, China

## SHINING 3D Technology GmbH

Stuttgart, Germany  
P: +49-711-28444089  
Breitwiesenstraße 28, 70565, Stuttgart, Germany

## SHINING 3D Technology Inc.

San Leandro, United States  
P: +1(888) 597-5655  
2450 Alvarado St #7, San Leandro, CA 94577

Tampa, United States  
2807 W Busch Blvd, Suite 200, Tampa, FL 33618

EINSTAR

Search

f X Instagram YouTube TikTok Amazon Shopping einstar.com