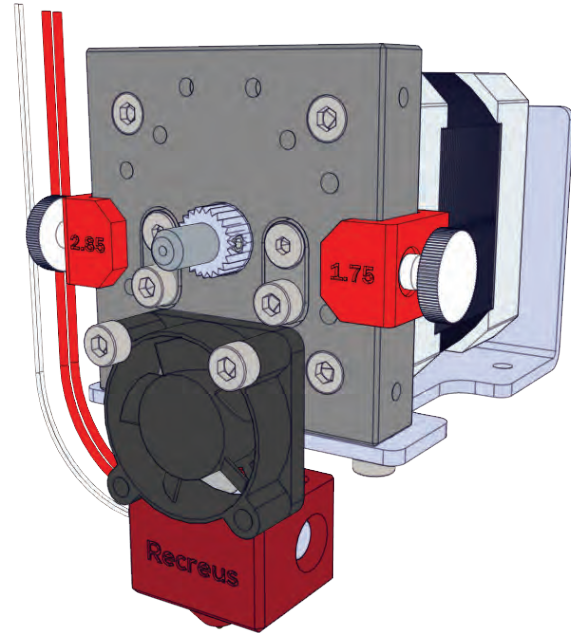
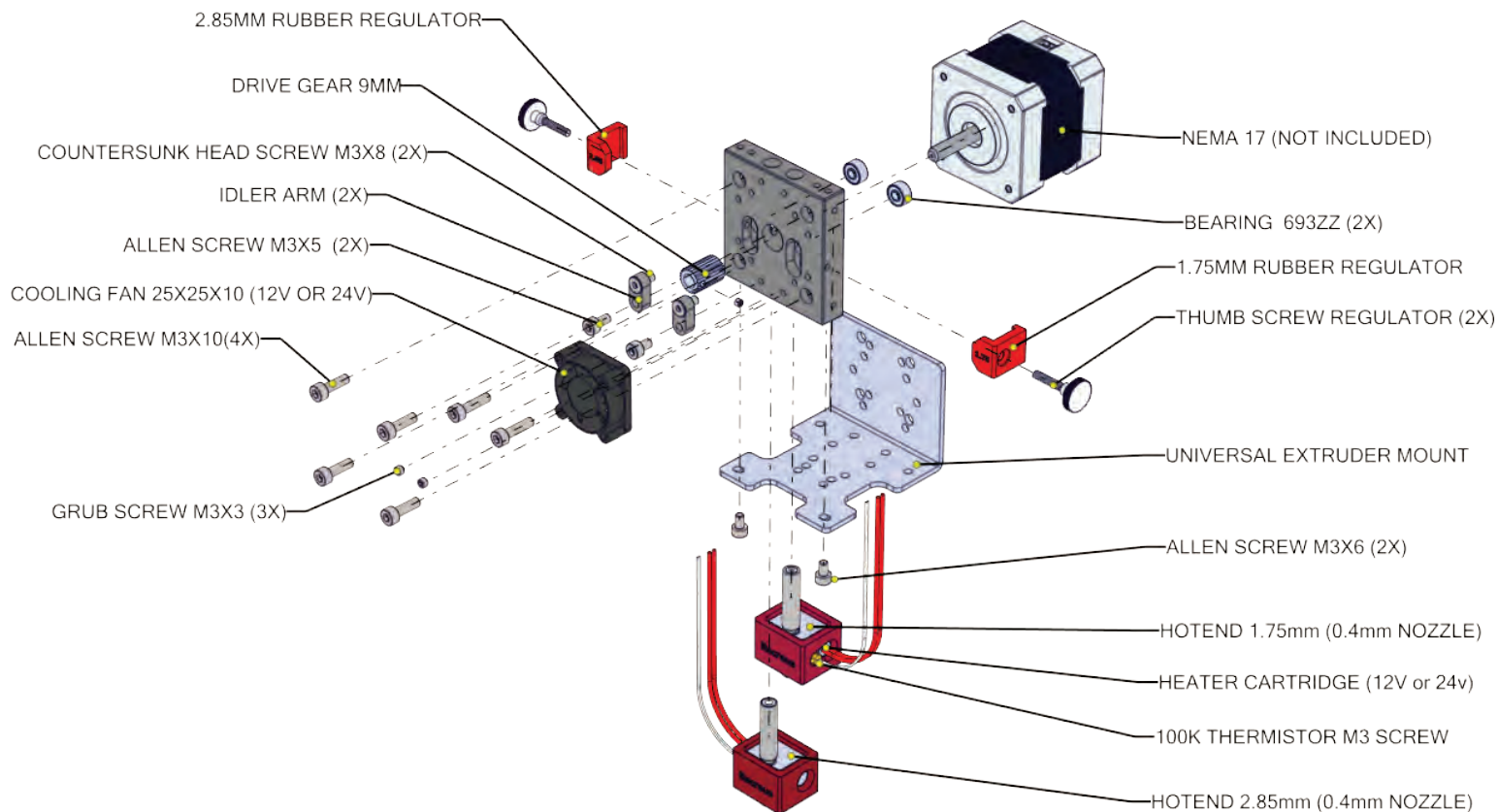


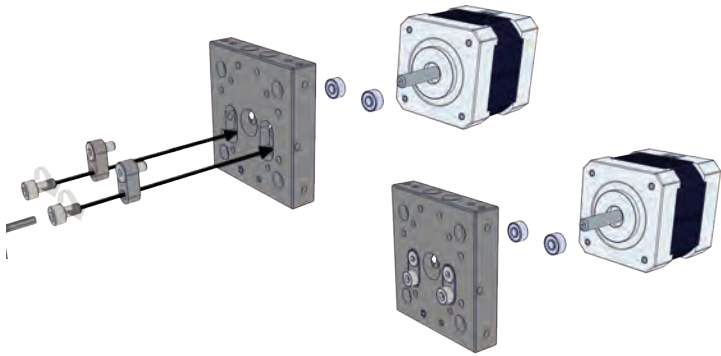
RECREUS EXTRUDER V3



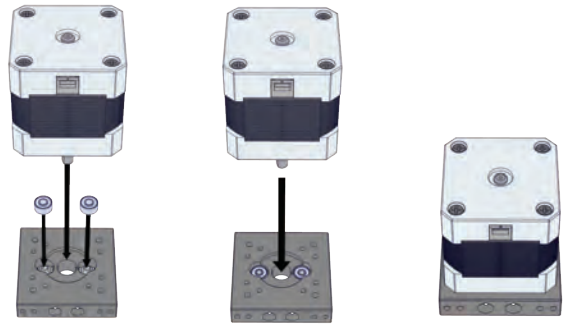
PACKING LIST



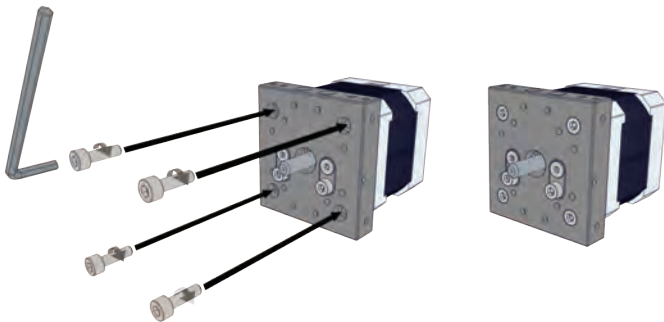
STEP 1: MOUNT IDLER ARM



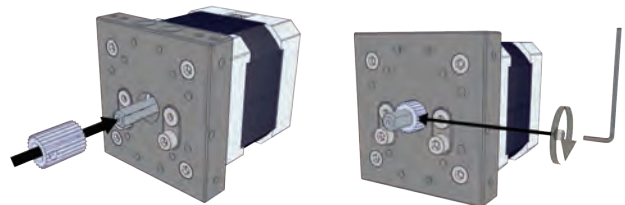
STEP 2: INSERT BEARINGS AND MOTOR



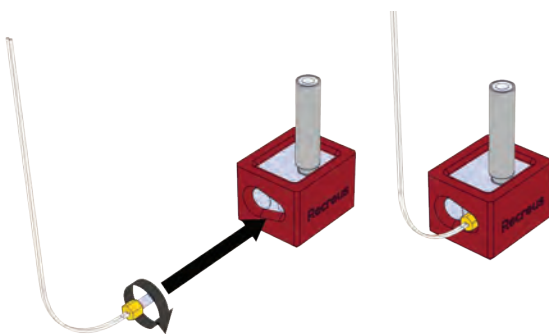
STEP 3: ASSEMBLE EXTRUDER BLOCK TO STEPPER MOTOR.



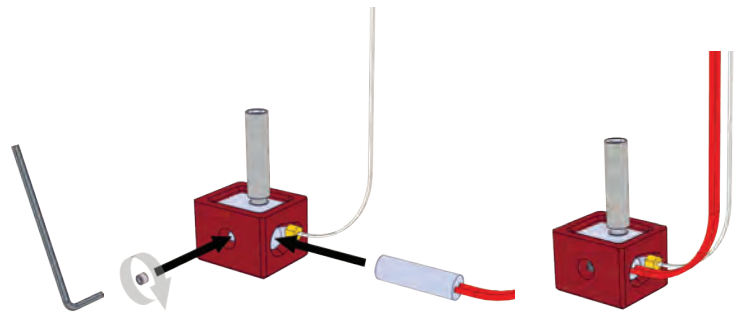
STEP 4: INSERT AND TIGHTEN DRIVE GEAR.



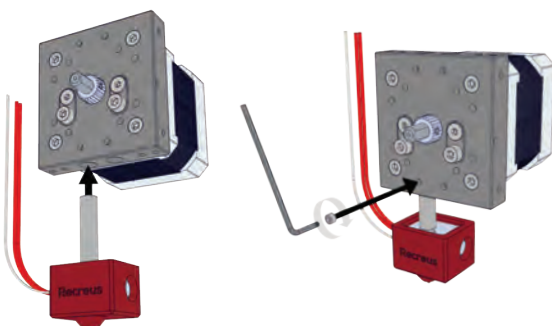
STEP 5: INSERT AND TIGHTEN 100k THERMISTOR.



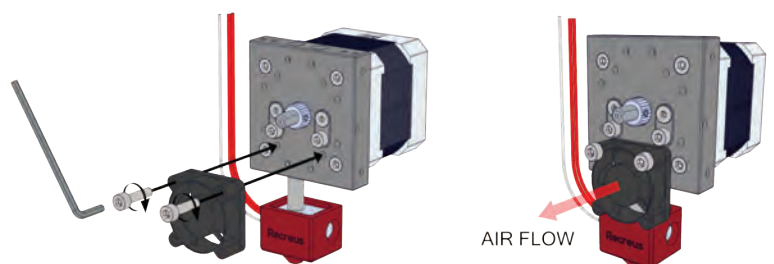
STEP 6: INSERT AND TIGHTEN HEATER CARTRIDGE



STEP 7 INSERT AND TIGHTEN HOTEND.

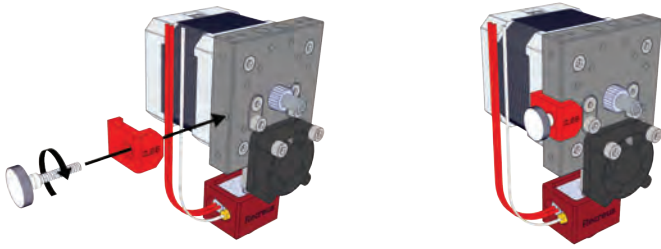


STEP 8: INSTALL 25X25 COOLING FAN



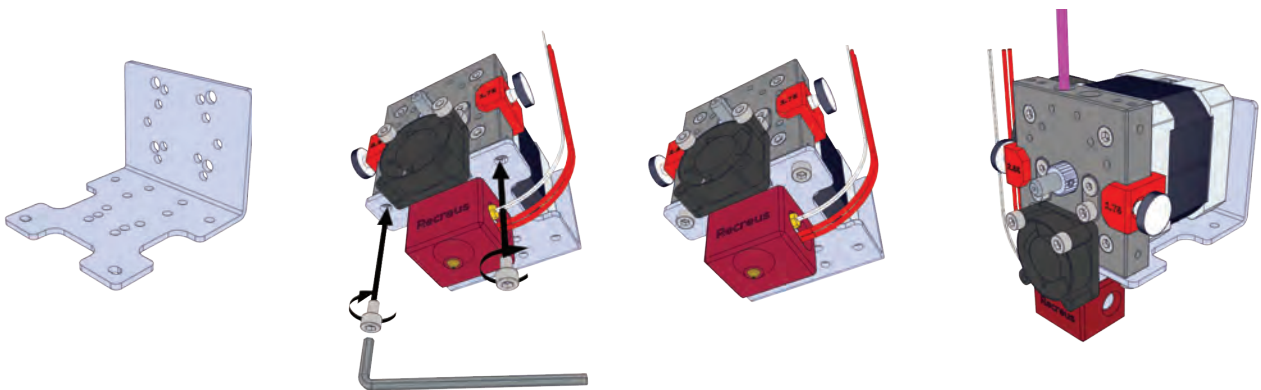
STEP 9:

TIGHTEN THUMB SCREW WITH RUBBER
REGULATOR

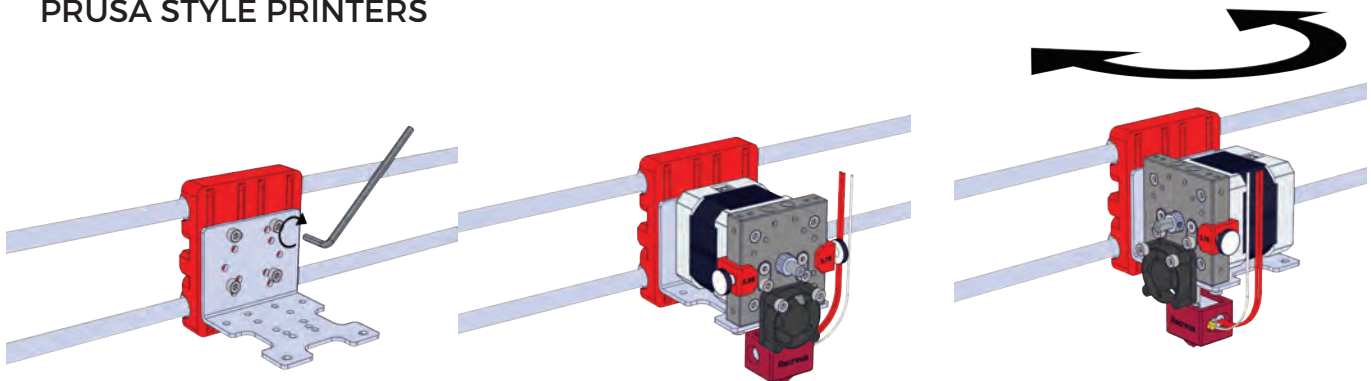


MOUNTING OPTIONS

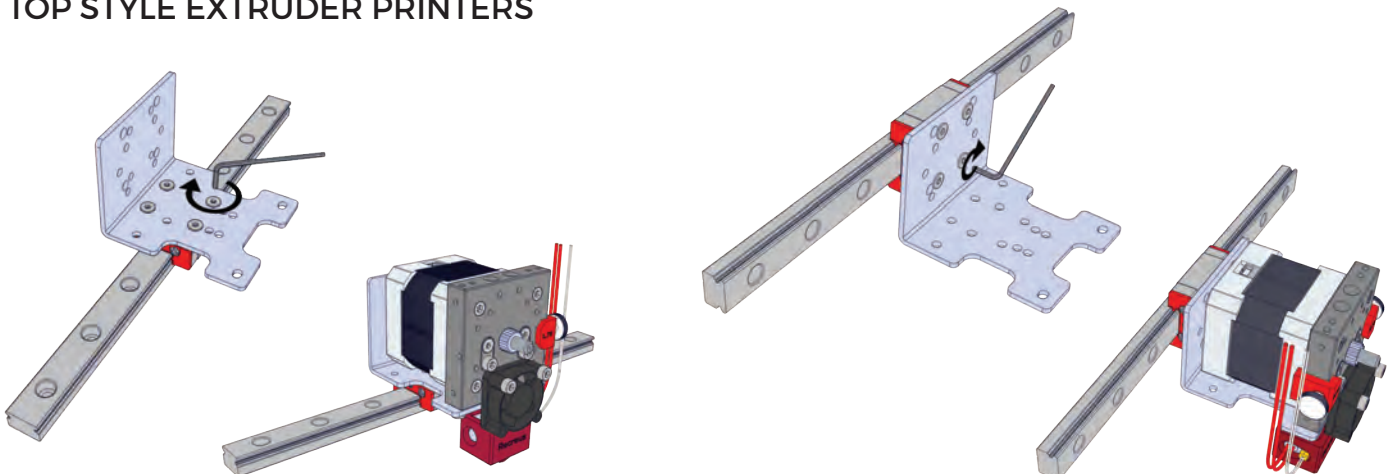
PROVIDED UNIVERSAL EXTRUDER MOUNT, THAT ALLOWS TO INSTALL IN ALMOST ANY
3D PRINTER WITHOUT TOO MUCH MODIFICATIONS



PRUSA STYLE PRINTERS



TOP STYLE EXTRUDER PRINTERS



CONFIGURATION

STEPS/REV,

Set up the following steps per revolution in your firmware (marlin, repetier, sailfish etc)

E0 (EXTRUDER)

- 137 steps/rev (1.8°- 16 Microstepping)

- 274 step/rev (0.9°-16 Microstepping)

- 274 steps/rev (1.8° 32 Microstepping)

- 548 steps/rev (0.9° 32 Microstepping)

THERMISTOR TYPE

Set up the following thermistor type in your firmware (marlin, repetier, sailfish etc)

- Type 0: EPCOS 100K Thermistor