

TEST REPORT

(RoHS)

Sample Name: PolySupport

Applicant Name: JF Polymers (Suzhou) Co., Ltd.

Service Agency: Shanghai EBTest Technology Co., Ltd.



TEST SPECIFICATION:

According to customer requirements, reference with EU Directive, test the content of 1. Pb 2. Cd 3. Hg 4. Cr₆₊ 5. PBBs 6. PBDEs . For details refer to next page(s).

APPLICANT IDENTIFICATION:

APPLICANT: JF Polymers (Suzhou) Co., Ltd.
 ADDRESS: Bldg 7, 2ndFloor, Haicheng Industrial Park, Changshu Economic Development Zone (CEDZ), Changshu, Jiangsu Province 215513, China

SAMPLE DESCRIPTION:

SAMPLE NAME: PolySupport
 SAMPLE DESCRPTION: White filament solid/ Refer to sample photo
 TEST PERIOD: 2015.09.17 — 2015.09.23
 ISSUED DATE: 2015.09.23

TEST METHOD(S):

Testing Item		Testing Method	Testing Limit (mg/kg)
Pb		With reference to IEC 62321:2008, determined by ICP-OES	2
Cd		With reference to IEC 62321:2008, determined by ICP-OES	2
Hg		With reference to IEC 62321:2008, determined by ICP-OES	2
Cr ₆₊		With reference to IEC 62321:2008, determined by UV-vis	1
PBBs	MONOBB	With reference to IEC 62321:2008, determined by GC-MS	5
	DIBB		5
	TRIBB		5
	TETRABB		5
	PENTABB		5
	HEXABB		5
	HEPTABB		5
	OCTABB		5
	NONABB		5
	DECABB		5
MONOBDE			5
DIBDE			5



RoHS TEST REPORT

E150916075C

PBDEs	TRIBDE	With reference to IEC 62321:2008, determined by GC-MS	5
	TETRABDE		5
	PENTABDE		5
	HEXABDE		5
	HEPTABDE		5
	OCTABDE		5
	NONABDE		5
	DECABDE		5

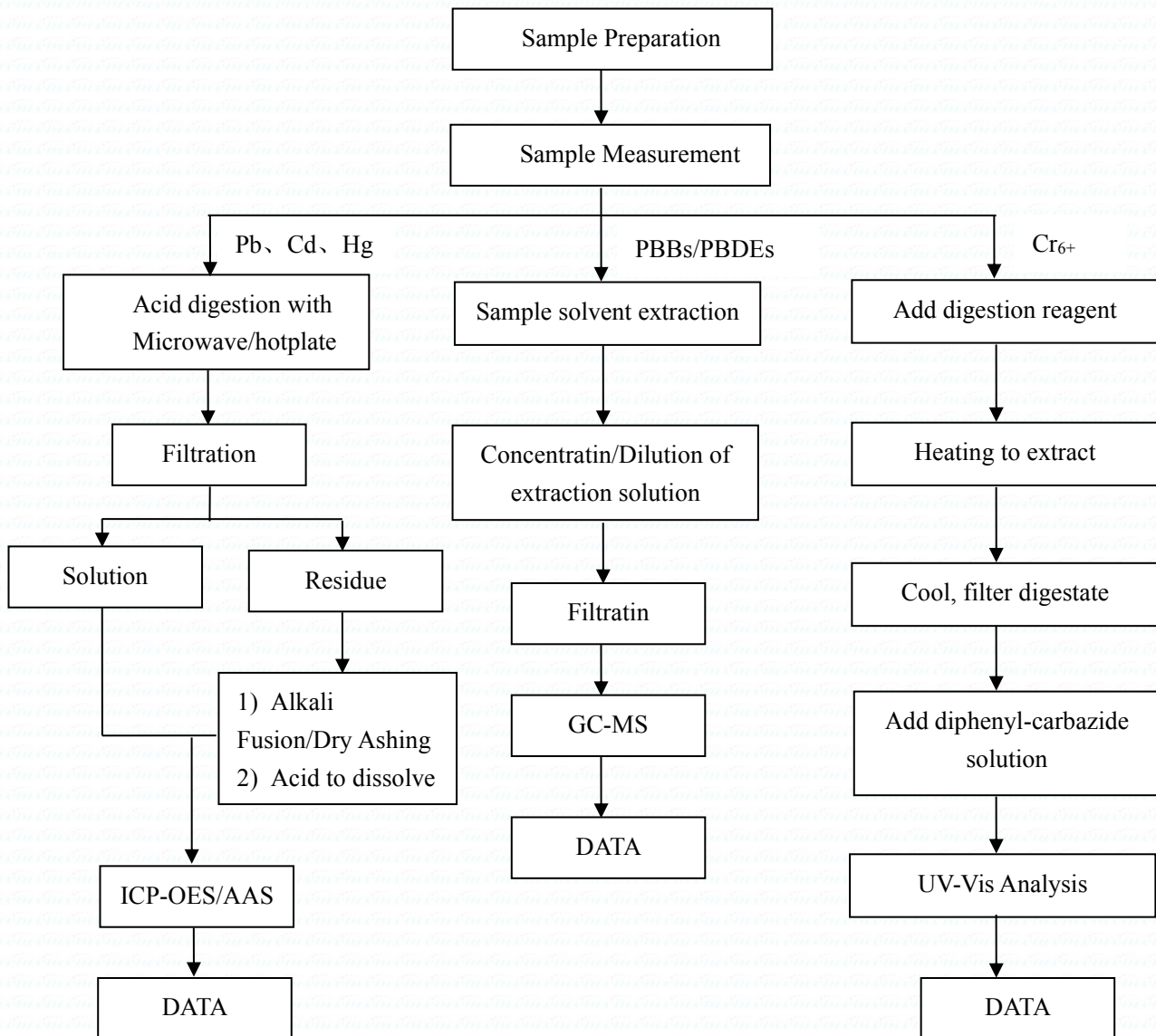
TEST RESULT(S):

Testing Item(s)		Directive Limit (mg/kg)	Result (mg/kg)
Pb		≤1000	N. D.
Cd		≤100	N. D.
Hg		≤1000	N. D.
Cr ₆₊		≤1000	N. D.
PBBs	MONOBB	≤1000	N. D.
	DIBB		N. D.
	TRIBB		N. D.
	TETRABB		N. D.
	PENTABB		N. D.
	HEXABB		N. D.
	HEPTABB		N. D.
	OCTABB		N. D.
	NONABB		N. D.
	DECABB		N. D.
PBDEs	MONOBDE	≤1000	N. D.
	DIBDE		N. D.
	TRIBDE		N. D.
	TETRABDE		N. D.
	PENTABDE		N. D.
	HEXABDE		N. D.
	HEPTABDE		N. D.
	OCTABDE		N. D.
	NONABDE		N. D.
	DECABDE		N. D.

TESTING ENVIRONMENT:

Temperature(23°C-26°C); Humidity(55%-60%)

TESTING FLOW CHART:



CONCLUSION:

Based on the test results, the sample conform to the requirements of the 2011/65 / EU-RoHS Directive Limit.

REMARK(S):

- mg/kg = PARTS PER MILLION; N.D.=NOT DETECTED or < MDL; N.A.=NOT APPLICABLE; N.T.=NOT TESTED AS THE APPLICANT'S REQUEST.
1. THE REPORT RELATES TO THE SAMPLE(S) SUPPLIED BY THE APPLICANT.
 2. THIS TEST REPORT IS NOT PERMITTED TO BE DUPLICATED EXCEPT IN FULL.

SAMPLE PHOTO(S):



***** END *****

