



FORMLABS APPLICATION GUIDE:

3D Printing Full Dentures with the Form 2

Today, 50 million dentures are produced globally each year, but only 1 percent are produced using digital tools. Traditional denture manufacturing is a complex craft with a steep learning curve, and dental labs increasingly struggle to find technicians with the advanced skills and expertise required to produce them.

[Formlabs Digital Dentures](#) allow dental laboratories to grow or expand production with an efficient, cost-effective 3D printed denture solution. Class II long-term biocompatible [Denture Base Resin](#) and [Denture Teeth Resin](#) enable dental professionals to produce 3D printed full dentures accurately and reliably, every time.

Although the manufacturing process to create a digital denture is different from the traditional workflow, the chairside process is very similar. This application guide details the critical considerations and steps for going from digitized patient model to 3D printed full denture on the Formlabs Form 2 desktop stereolithography 3D printer.

Table of Contents

1. Scan and Design	4
2. STL File Output.....	8
3. Printing and Post-Processing	9
4. Print	11
5. Post-Processing	12
6. Assembly.....	15
7. Final Post-Cure	17
8. Finishing.....	18
9. Deliver	19

Before you get started with this in-depth guide, [watch our “Tech Tips With Digital Dentures” video](#) for an overview of how Formlabs Digital Dentures work.

Needed From the Dentist

- A final impression, poured and articulated
- Bite rim with all necessary information, such as: lip line, midline, occlusal plane
- Prescription with desired tooth shape, shade, and other clinical considerations

Essentials

Made by Formlabs

[Form 2 3D printer](#)

[PreForm 2.19.2](#) or higher

Firmware 1.19 or higher

[Resin Tank \(LT recommended\)](#)

Build Platform (used with
biocompatible materials only)

[Denture Base Resin](#)

[Denture Teeth Resin](#)

[Form Wash](#) or [Finish Kit](#)

[Form Cure](#)

Made by Third Parties

Desktop scanner

Denture design software

[Pyrex 4 cup round container](#)

[Glycerin](#)

[Silicone tongs](#)

Low speed dental handpiece with
cutting and finishing wheels

Handheld UV light cure unit

Lathe with rag wheel for polishing

Steam cleaner

1. Scan and Design

1.1 Scan

Digital denture design software requires a digitized model or impression of the patient's oral anatomy in order to design the removable prosthetic.

The best available method for creating a digital file for edentulous patients is to scan the fully articulated, poured model and wax rim with a desktop laboratory scanner.

To optimize the accuracy of the bite, use a desktop scanner that can scan the bite of the fully articulated model without unmounting it. For example, [3Shape's E Series scanners](#) can scan the bite with the model in the articulator.



1.2 Design



1.2a Denture Design Software

Import the digital file of the patient's anatomy into your denture design software to begin creating the prosthetic.

At Formlabs and in this guide, we use 3Shape Full Denture Design 2018 (2.18.1.0). Older versions may be missing some features. Adjust your workflow according to the software you use. Contact your CAD software distributor for specific questions and guidance.

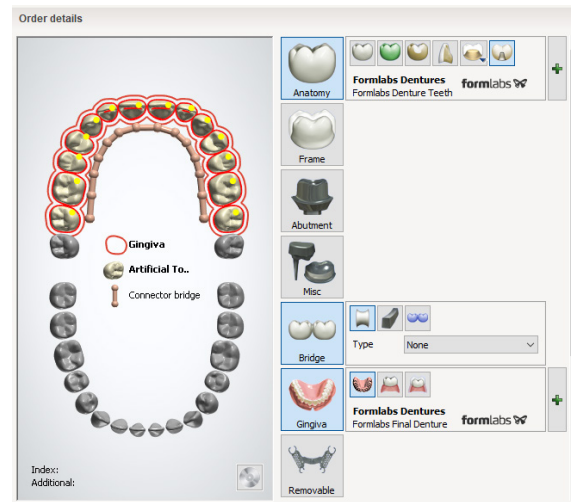
› [Download our 3Shape materials library for 3Shape 2018 \(DME\)](#)

› [Download our 3Shape materials library for 3Shape 2017 \(DME\)](#)

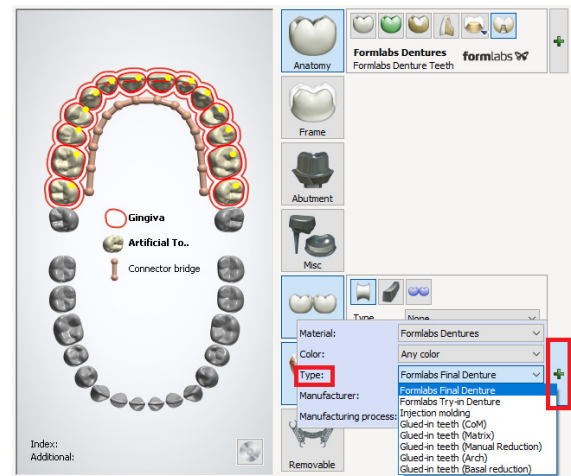
1.2b Order Setup

To start, create an order in 3Shape Dental Manager. Correct order setup ensures correct manufacturing output.

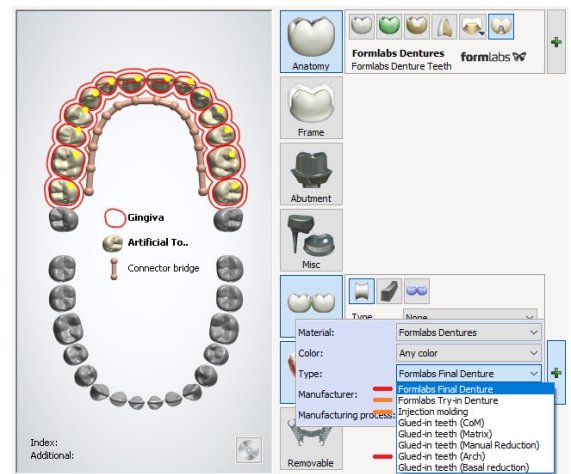
1. **Select all of the teeth** for the digital denture.
2. **Under “Anatomy,” select “Artificial Tooth Type.”** Under the plus sign, select “Formlabs Dentures” as the material type.
3. **Under “Gingiva,”** select the default setting, “Dentures Gingiva.” Under the plus sign, select “Formlabs Dentures” as the material type.
4. **Under “Bridge,”** select the default setting, “Connector Bridge.” This setting is required for dentures that will be splinted together. To print individual teeth, skip this selection.



Return to the “Gingiva” submenu. Select the plus sign. Under “Type,” choose one of the following options:

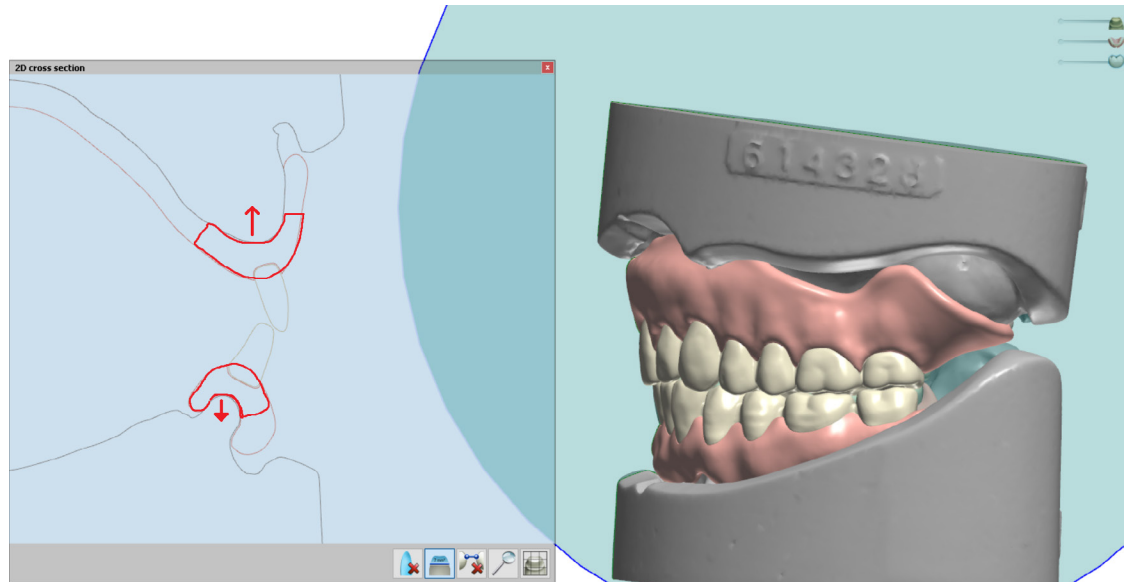


- Select **“Formlabs Final Denture”** or **“Glued-in teeth (Arch)”** to produce the base and teeth as separate manufacturing files. This is ideal for 3D printing full dentures.
- Select **“Formlabs Try-in Denture”** or **“Injection molding”** to produce the base and teeth as one solid piece. This is ideal for try-in dentures.



1.2c Design Settings

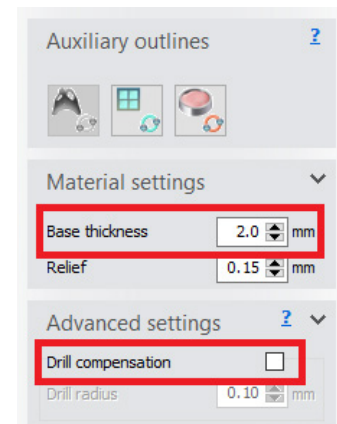
Vertical non-load-bearing walls can be thinner than 2.0 mm if needed (for example, to thin the facial of the denture for esthetic reasons). Always use the 2D cut tool to confirm thickness.



Critical thickness areas of a digital denture.

When designing or drawing the denture base during the “Full Denture Initial Setup” stage, open the “Materials settings” and “Advanced settings” submenus. Confirm the following:

- **Base thickness is greater than 2.0 mm.** A thicker base creates a stronger 3D printed denture.
- **Disable drill compensation.**

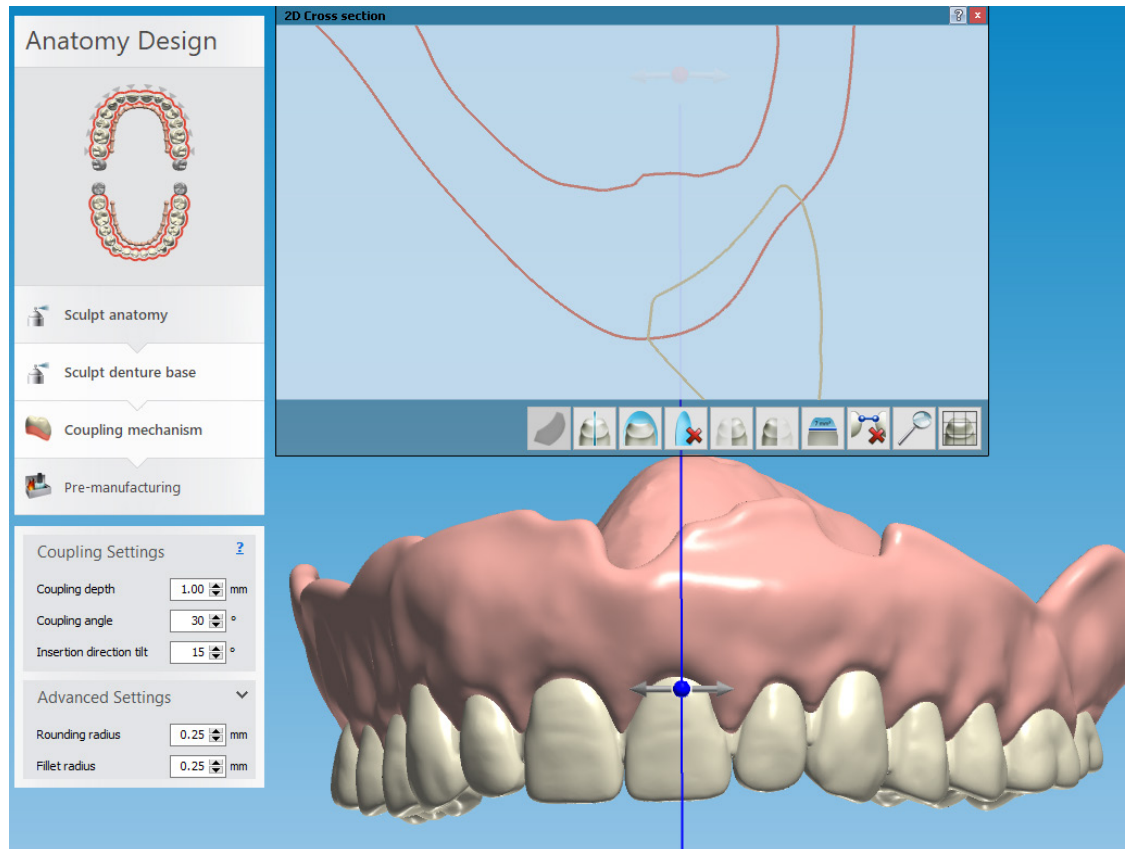


1.2d Coupling Settings

To achieve a natural look for the gingival margin, follow these “Coupling mechanism” recommendations. These settings determine how the denture teeth cut sockets from the denture base.

Since Denture Base Resin is very translucent, long roots to the teeth can look unnatural. Unlike traditional denture teeth, a longer root does not correlate to a stronger bond. The final cure unites the two resins, base and teeth, into one solid part.

Under “Coupling Settings,” confirm that the depth is set to 1.00 mm and the angle is between 15 and 30 degrees for optimal results.



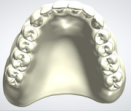

















2. STL File Output

Denture teeth or card libraries are an important part of the digital denture process. Library compatibility varies by software. For example, some “open” libraries restrict output. Some libraries generate the denture teeth splinted, but not individually.

Official teeth libraries and output options

Manufacturing output
(Assembly type)



	Monoblock	 Distributed by Ivoclar	 Free of charge	 Free of charge	 Free of charge	 Free of charge + noising
	Teeth in arch	 Distributed by Ivoclar	 Free of charge	 Free of charge	 Free of charge	 Not available
	Standalone teeth	 Distributed by Ivoclar	 Not available	 Enabled by Kulzer	 Free of charge	 Not available

Denture libraries supported by 3Shape and what output they support.

› Open the Download Center in the 3Shape Dental Manager Control Panel to download new libraries. [See 3Shape's documentation for details.](#)

Denture teeth library availability and outputs will likely change as the industry evolves. Follow your digital denture design software provider's guidelines for the most up-to-date information.

3. Printing and Post Processing

3.1 Import Files Into PreForm

Once you export the STL files from the denture design software, import the files into PreForm, the software that nests files for printing on the Form 2.

Select the material for printing: Denture Teeth or Denture Base Resin.

Use PreForm version 2.19.2 or higher and firmware 1.19 or higher.

3.2 Orientation

Proper part orientation is critical to ensure part accuracy and reduce post-processing after printing.

Denture Teeth

Orientation:

Always nest denture teeth occlusal side down at a 10 to 25 degree angle.

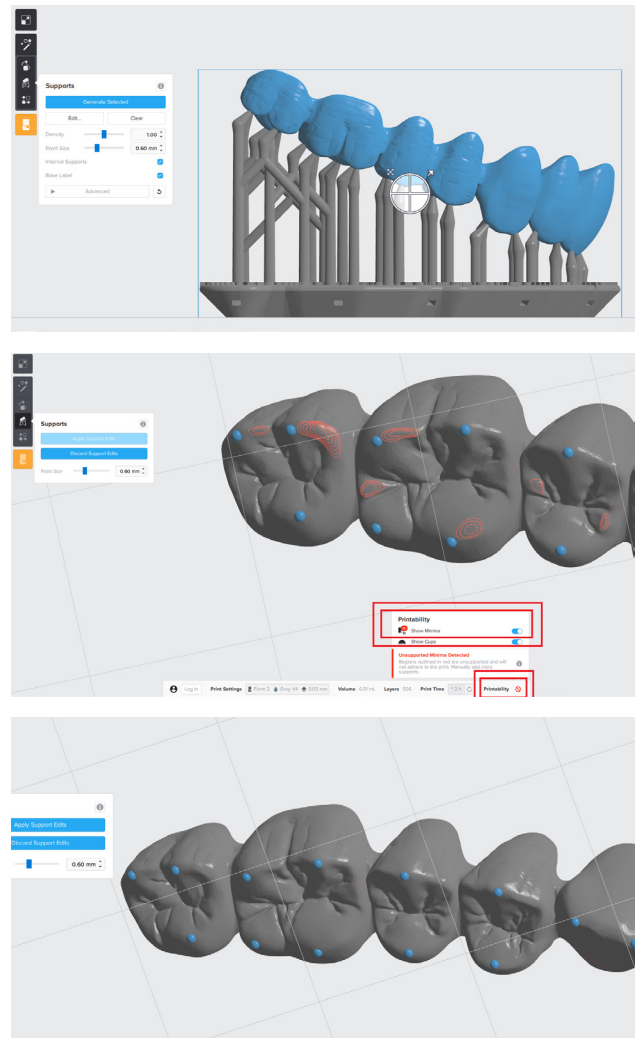
Supports:

To edit support touchpoints, choose “Edit...” in the Supports menu.

Avoid support touchpoints on areas where the teeth meet with the denture base.

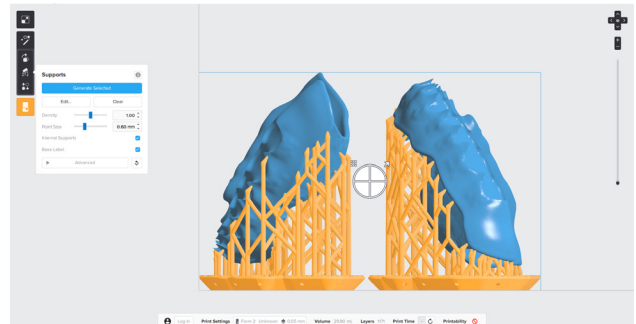
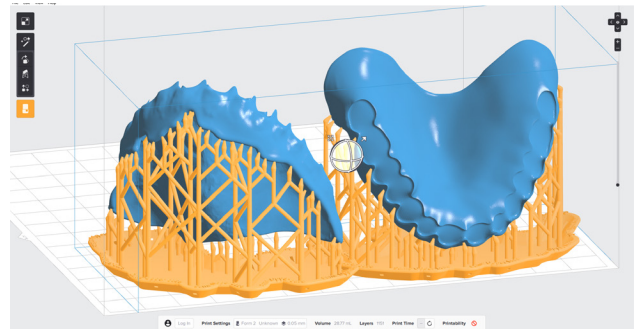
Add support touchpoints to the teeth or arch on the cusp tips or incisal edges of the teeth, facing the build platform.

While adding or editing supports, click the “Printability” button and enable “Show Minima”. The Printability feature guides you to add only as many supports as necessary to reduce post-processing time.



Denture Base

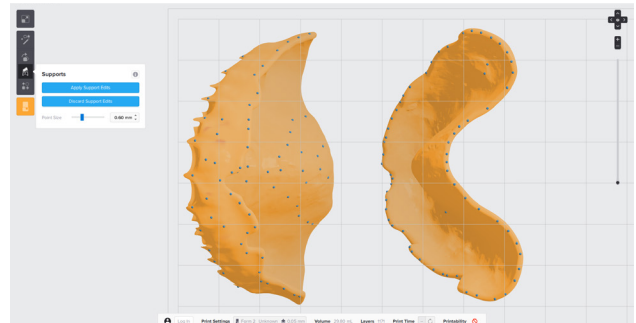
Orient the denture base parts at a slight angle, with the intaglio surface toward the build platform. The anterior buccal can face toward or away from the build platform.



Concentrate support touchpoints around the perimeter edge of the denture. Support removal from these areas is less laborious and leaves critical detailed areas support-free.

On the **intaglio surface**, manually add as few supports as possible. Add support touchpoints from the red, unsupported, or minima areas.

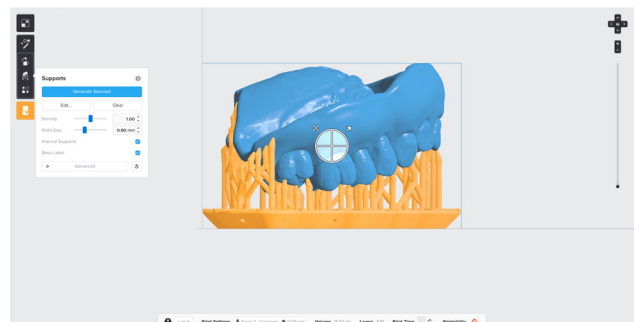
Remove support touchpoints from the denture teeth sockets or cervical margin.

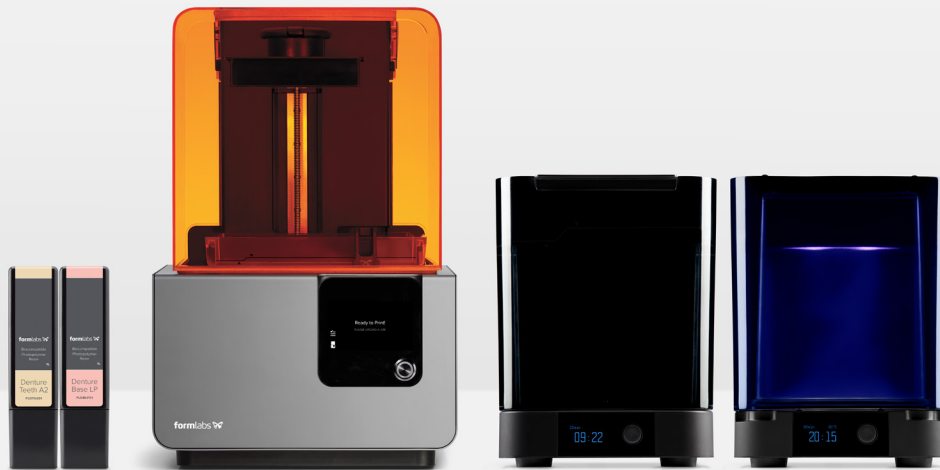


Denture Try-in

Print the full denture, teeth, and base with the occlusal side facing downward, at a 30 degree angle.

Add supports to the teeth as described in **Denture Teeth: Supports** above.





4. Print

Prepare the Form 2 for printing by inserting a resin tank, resin cartridge, and build platform into the printer. **Thoroughly shake the resin cartridge before use.** Send the job to the printer from PreForm, and start the print.

For full compliance and biocompatibility, Denture Base Resin and Denture Teeth Resin each require a dedicated resin tank, build platform, and Finish Kit or Form Wash. Only use the Finish Kit or Form Wash with other Formlabs biocompatible resins, such as Dental LT Clear Resin.

5. Post-Processing

5.1 Primary Wash

Always use gloves when handling uncured resins and parts.



Remove the printed denture base or teeth from the build platform using the part removal tool provided by Formlabs, or wash directly on the build platform using Form Wash. Rinse the part in isopropyl alcohol (IPA), 96 percent or higher, for ten minutes in Form Wash, or five minutes in an ultrasonic bath, to dissolve any uncured or excess resin.

After washing, allow the parts to air dry or use compressed air to remove alcohol from the parts' surfaces.

5.2 Support Removal

Once the parts have been washed completely, remove the raft and supports from the base and teeth. To save time, consider using a low speed dental handpiece, cutting disc, and rubber wheel.

To remove the raft and supports:

Cut through supports a few millimeters from where they meet the part.



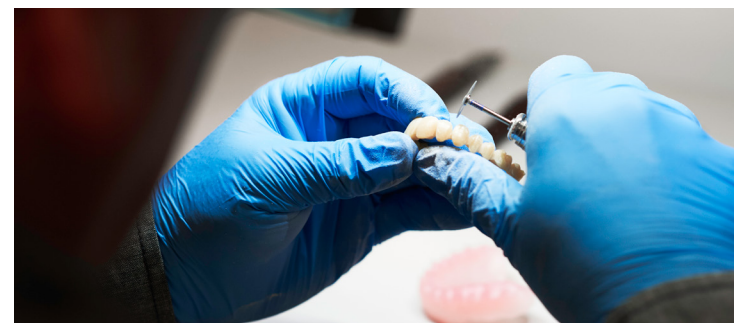
Remove the raft.



Continue to remove and smooth the remaining support structure to the desired outcome.



If teeth were printed splinted together, reduce the embrasures between teeth with a thin flexible diamond disc for a more natural look.



5.3 Final Wash

Once the supports and raft have been removed, wash parts in IPA one more time for five minutes in Form Wash or an ultrasonic bath to remove any debris. Again, let the part dry or use compressed air to remove alcohol from the parts' surfaces.





6. Assembly

Follow the steps below to insert and bond the teeth into the base.

Insert the teeth into the denture base to test the fit. If anything inhibits seating, trim the teeth and base as needed using the hand tool.

Remove the top vent cap from the cartridge. Pour a small amount of uncured Denture Base Resin (the same shade as printed) into a small glass cup. [A large tipped syringe](#) can be used to transfer the resin the cartridge to the cup.

Use an instrument, like a small brush, to wet the internal surface of the tooth socket with resin. Do not fill the entire socket with resin.



Work around the entire base, painting the Denture Base Resin into each socket. Insert the teeth into the appropriate socket on the base and press together firmly, applying more pressure toward the posterior of the arch.

Using a small brush, remove any excess resin from the buccal and facial of the denture.



While still pressing the arch together, use a handheld UV cure light to start curing where the teeth and base meet. Start by curing the rearmost molars on both sides of the arch. Increase the clamping pressure towards the front of the arch, then move to cure the anterior teeth. Remove or add Denture Base Resin as needed. Finally, move the handheld UV cure light around the entire arch to complete the tack cure.



Inspect for proper assembly of the denture, and confirm that any triangles or open areas between the base and teeth have been filled with Denture Base Resin. If necessary, add additional resin and repeat the process above.

Always use protective eyewear when working with UV cure lights.



7. Final Post-Cure

At this point, the denture is ready for the final post-cure. Form Cure is recommended and meets all the requirements for optimal post-curing.

To maintain biocompatibility, post-cure the assembled denture while submerged in glycerin. When using Form Cure, we recommend a [Pyrex 4 cup round glass container](#) and [vegetable glycerin](#).

Fill a glass container with glycerin. Preheat the glycerin to 80 °C in Form Cure. Use heat resistant silicone tongs to fully submerge the assembled denture in the glycerin, leaving the container inside Form Cure. Cure at 80 °C for 30 minutes.

The glycerin and denture at 80 °C are hot. Use [heat resistant silicone tongs](#) to insert and remove the denture from the curing chamber. To prevent burns, do not touch the metal turntable or container.

After the first 30 minute post-cure, use the tongs to flip the denture to the opposite side. Post-cure the denture again at 80 °C for 30 minutes.



8. Finishing

After post-curing is complete, carefully remove the denture from the glycerin with silicone tongs. Wash the part in a sink under room temperature water until it is no longer slippery or slick to the touch. Allow it to air dry. As with a traditional denture, polish the denture at low speeds using a rag wheel on a lathe with pumice. Finish polishing at high speeds using a polishing compound. Rinse again with room temperature water and steam clean to sterilize the finished denture.



9. Deliver

Digital manufacturing of prosthetics is the future of dental technology, with the potential to bring higher affordability and quality to patient care as it evolves. Digital techniques do not remove the artistry from production of dentures: they are another set of tools to help technicians produce highly customized, patient-specific prosthetics.

3D printing has promised to change the way things are made, and 3D printed dentures are one of the first truly economical ways in which people outside of fabrication industries will come to use and interact with 3D printed parts on a day to day basis. When you deliver your 3D printed denture, we hope you will take pride in being a part of this groundbreaking shift.



Contact Sales

Contact Formlabs to learn how desktop stereolithography (SLA) 3D printing can simplify dental workflows and request a free sample part for your specific application.

[Request a Free Sample Part](#)

North America Sales Inquiries
sales@formlabs.com
617-702-8476
formlabs.com

Europe Sales Inquiries
eu-sales@formlabs.com
+44 330 027 0040
formlabs.com

International Sales Inquiries
Find a reseller in your region:
formlabs.com/find-a-reseller