



# THE WORLD'S FASTEST DENTAL 3D PRINTER



## SPEED

6 Full Arches in 5 mins



## ACCURACY

$\pm 50\mu\text{m}$ , up to 95.05%  
 $\pm 100\mu\text{m}$ , up to 99.6%



## RELIABILITY

Patent Liquid Cooling System





## Key Features



### High Efficiency Liquid Cooling

Maintain system temperature below 40°C



### Micro-Stereo Composite

Patent low force stereo peel technology



### High Power Collimated Light

16mW/cm<sup>2</sup> high power, 95% Uniformity



### Resin Temperature Control System

Maintain optimal reaction Temp

**THE WORLD'S FASTEST DENTAL 3D PRINTER**

## THE WORLD'S FASTEST DENTAL 3D PRINTER



## Technical Specification

DESCRIPTION		SPECIFICATION
PERFORMANCE	Printing Technology	LCD Stereo Lithography
	Build Volume	192 × 120 × 180mm 7.5" × 4.7" × 7.1"
	XY Resolution	49.8 μm
	Maximum Accuracy*	±10μm
	Layer Thickness(Z Resolution)	10~200μm(25, 50, 100μm recommended)
	Separation Mechanism	Stereo-Polymer Multi-layer Film Peel
	Support	Uniz smart support technology
	Printing Speed**	6 dental models printed in 5 minutes
STRUCTURAL	Dimension / Weight	380 × 380 × 1230 mm [WxDxH] 15" × 15" × 49" 60KG/132LB
	Dimension/Weight (Including packaging)	490 × 490 × 1300 mm [WxDxH] 20" × 20" × 51" 65kg/144LB
	Operating Temperature	18~28° C (64~82° F)
	Power Requirement	110V/60Hz 6A 220V/50Hz 3A
	Optical System	4th Generation Collimated Light Source
	Mechanical	Cast Aluminum & CNC, Sheet Metal
	Connectivity	USB Flash Drive, Wi-Fi, Ethernet
	Control Pannel	7" Touch Screen
SOFTWARE	System Requirement	Windows 7 and up (64-bit only) Mac OS X 11.4 and up (64-bit only) 16GB RAM, OpenGL 2.1, Discrete Graphics
	Advanced Features	Built-in Advanced Model Repair, Dentist and Technician Friendly, Ultra Large File Support (1GB+)
	Slice Format	zslr
	Compatible Format	STL, OBJ, AMF, 3MF

\* The data are obtained by using standard dental models, and the test results will be different when using different models.

\*\*Result comes from specific speed testing model, others maybe different.

## THE WORLD'S FASTEST DENTAL 3D PRINTER





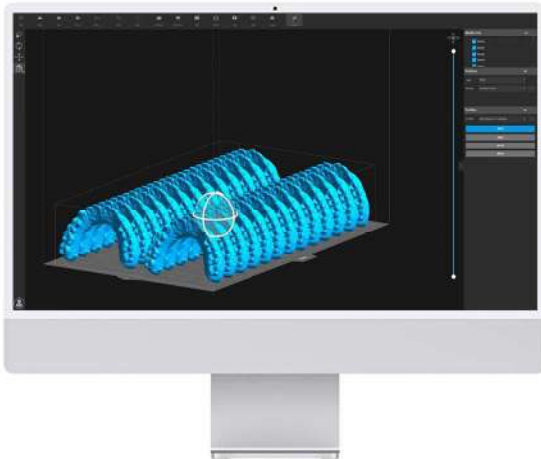
## High-Accuracy 3D Printing Materials



**THE WORLD'S FASTEST DENTAL 3D PRINTER**



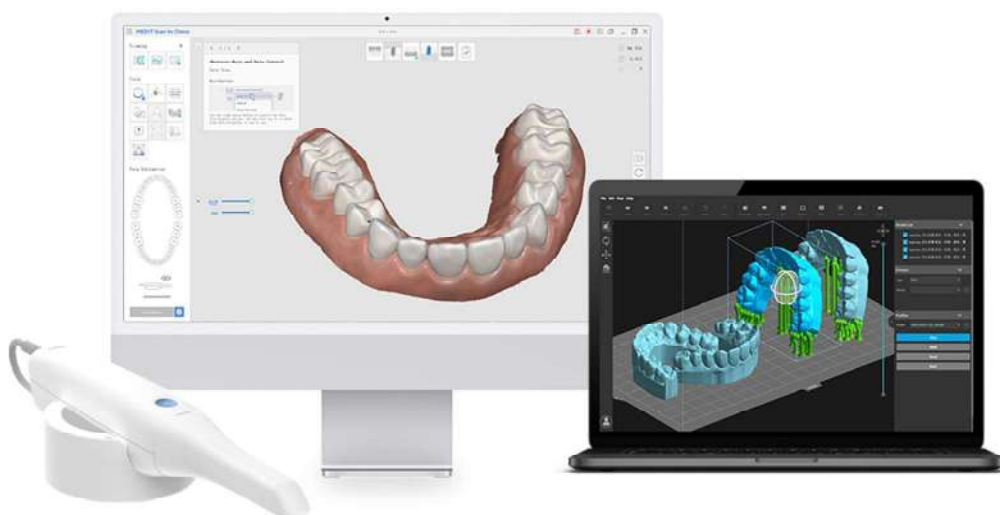
## UNIZ Dental Slicing Software



- Smart scan repair
- Intelligent automatic support
- High-speed model slicing and storage
- Customized edit functions

## Integration and Partnership

Seamless integration with leading 3D scanning and digital design software providers



3shape

MEDIT

exocad

**THE WORLD'S FASTEST DENTAL 3D PRINTER**

## Trusted by Dentistry Leader



**Mr. Breads**  
Founder of Great Lakes

3D printing is revolutionizing the practice of dentistry. Not only can procedures that once took weeks, now take just hours with chair-side production of dental models and surgical guides, but putting local dentists in full control of their patient-specific products — including night guards, temporary crowns, and dentures — means that there's fewer appointments needed, vastly lowered costs, and improved patient care.



**Dr. Michael Scherer**  
Chief Clinical Officer at Zest Dental Solutions

The resolution and speed of the UNIZ NBEE machine is very impressive. I'm giving the UNIZ a go at what I do a lot in my lab... monolithic restorations and models.



**Dr. Steve**

3D printing enables different additive manufacturing techniques to be used in dentistry, providing better workflows and more satisfying clinical results. UNIZ provides me a low cost and relatively fast printing experience.



**Dr. Kim**  
Director of Clinical Development Research Institute

We have been busy doing validation work with several resins on NBEE and have had great success. The parts look great, and the speed is impressive. We would really like to show you our results and how we can help create good resin partnerships with our resin partners to quickly boost visibility and sales.



**Dr. Christian Brenes**  
USA Top100 doctors 2022  
Professor at Medical University of South Carolina  
Founder of Digital Dentistry Education

We will be evaluating the NBEE dental printer from UNIZ. We have tried the Slash model and the expectations for this one is higher. It is a bigger unit; many many models to fit.



**Dr. Tareq**

Not all dental 3D printers are the same. Like their saying, NBEE does change the digital dentistry, and this machine prints faster than any I've ever used.